

Kaiti Kōrero

ISSUE 13 – NOVEMBER 2007

www.kapaikaiti.com



Ngā Toi o Kaiti – The Arts of Kaiti

Did you know Kaiti is home to one of the greatest works of art made in Aotearoa in the 20th century?

Te Poho o Rawiri wharenuui, opened in 1930, is a masterpiece. Carved by Pine Taiapa and the other carvers of the Rotorua School of Arts and Crafts and supervised by Tā Āpirana Ngata, Te Poho o Rawiri is both innovative and traditional, respecting the past while also taking into account changing lifestyles and culture. Its whakairo (carvings), tukutuku (weavings) and kōwhaiwhai are outstanding.

This issue of *Kaiti Kōrero* features the work of another outstanding Māori artist who lives in Kaiti. **Mel Tahata** grew up in Kaiti before heading off to Auckland and studying at Elam art school at the University of Auckland. Working in a whole lot of different ways – Mel is a sculptor, a film-maker and a DJ – her show *Mauri Ora* at the Tairāwhiti Museum earlier this year was a series of sculptures using found materials, which talked about local issues she'd been thinking about since her return to Gisborne in 2005. We've illustrated *Kaiti for Life*, which was included in Mel's show at the museum, and we think it is a masterpiece with a great message.

From Te Poho o Rawiri, carrying the past into the present, to Mel Tahata taking Māori art into the future, we think Kaiti is a suburb with more talent than you can shake a chisel at. Ka Pai Kaiti!



Dob in an Artist!

Does grandad spend a lot of time in the garage making strange things out of wood? Is aunty spending a lot of time in the harakeke? Do you suspect your neighbour of having artistic talent? Is your child the next Picasso or Pine Taiapa?

If so, KaPai Kaiti wants to hear from you! Dob In An Artist is your chance to let us know about your talented family, friends and neighbours. They will get a write-up in *Kaiti Kōrero*, and KaPai Kaiti will put their names in our Art of Kaiti database.

We think Kaiti is by far the most creative suburb in Gisborne, so help prove our theory right!

Young and old, Pākehā and Māori, traditional, modern or post-modern, we want to know who they are and what they make.

Contact Damian Skinner on 868-6889 / 027527452 or damian@kapaikaiti.com

Kaiti for Life (2007) is made from an old polar fleece blanket, sewn with white denim and red polyester satin. Mel created the stencil, and then projected it onto the fabric at a large scale and cut it out. Her mother helped to sew the artwork, which is fully machine washable.

Inspired by Bro'Town and the slogan 'Morningside for Life', Mel has created a patch for everyone in Kaiti to wear with pride. Showing that sculpture doesn't just have to be stone, wood or bronze, *Kaiti for Life* is funny, smart and warm hearted.

KaPai Kaiti is a Kaiti residents association open to anyone committed to making Kaiti an even better place to live.

COMMUNITY NOTICES

Car Crusher

Is there a wreck in the back yard that you'd love to get rid of? Tired of that restoration job that never quite got finished? Sick of looking at that old fridge or washing machine that didn't make it to the dump?

Bay-Press Metal Recyclers would love to hear from you. They have a free service available to anyone who would like to get rid of scrap metal in the form of cars or whiteware. For no cost they will collect your scrap metal and take it away. If you have some grass you'd like to see again before Christmas, give them a call

Tim Cridge, Bay-Press Metal Recyclers

021 246 1213 / 025 327 201

Are you getting what you are entitled to?

Danny Fong works for Inland Revenue, and his job is to give advice about Working For Families, Child Support, KiwiSaver and personal tax returns to make sure whanau are receiving all the tax breaks they are entitled to.

He will be at the Kaiti Community House, cnr Oxford and Ranfurly Streets, first Tuesday of every month, 10am – 12pm. If you have any questions, concerns, or are just curious – he's the man to see.

Danny Fong, Family Liaison Officer, Inland Revenue

Ph: 986-2003 / Cell: 029 986-2003

C.L.A.S.H '07

(Celebrating Life And Sharing Happiness)

Live bands, DJ's, Krumping and Hip Hop competitions/battles, Sports, Graffiti Wall and more

When: **Saturday 8 December**

Where: **Waikirikiri Reserve**

Cost: **Free**

Contact: **Pip Davies / Ph: 868 7722 / pip@ora.org.nz**

Nau mai haramai!

Ilminster Pool

KaPai Kaiti are working hard to make sure the pool is open every day in January this year – so watch this space!

Monthly Kaiti Community Forum

KaPai Kaiti host monthly meetings for Kaiti residents at 7pm on the first Monday of each month.

These are now based at the Kaiti Community House, cnr Oxford & Ranfurly Street.

The last hui for this year is on Monday 3 December 2007.

For more information contact:

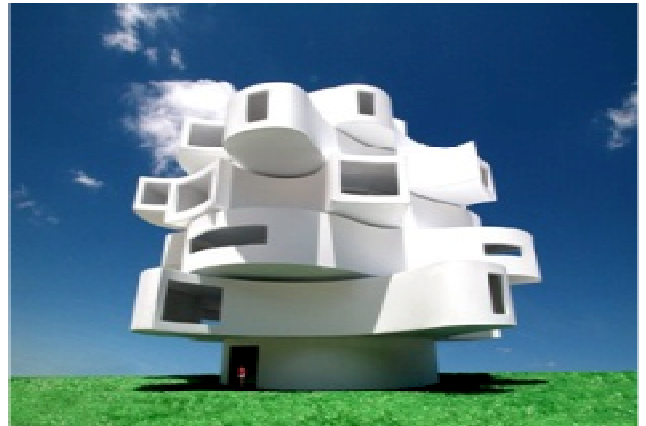
Damian Skinner on 8686889 or damian@kapaikaiti.com

www.kapaikaiti.com

Are you tired of renting?

Do you dream of owning your own home?

Are you living in damp and overcrowded conditions and worried about your family's health?



Habitat for Humanity may have the answer.

They are holding meetings in Gisborne this week, and want to hear from whanau who think they might be eligible.

If you have a need for new and better house, can meet the weekly repayments, and are prepared to help build your new house, then Habitat for Humanity would love to meet you.

Their next Meetings for Families will be held on **Wednesday 5th December 2007.**

Venue: **Lawson Field Theatre, Fitzherbert Street**

Times: **1.30pm & 7pm**

You can pick up an application form, and find out more about the organisation and its work.

If you have any questions, please contact

Garry Mabey on 027 674-0941 or

Shirley Bennett on 07 846 2226 ext 703

Waitangi Day 2008

KaPai Kaiti is organising the annual Waitangi Day Festival, which will be held at Waikirikiri Park on Wednesday 6 February 2008.

We're looking for performers, artists, volunteers, cooks, ideas people, historians, show-offs, people with loud voices and strong arms, people who can drive, walk, run, stand and sit.

If that's you, or you'd just like to be involved in some way, our next meeting is **Tuesday 11 December.**

**Where: Kaiti Community House
cnr Oxford and Ranfurly
Streets, Kaiti.**

When: 4–5 pm, Tue 11 December.
